

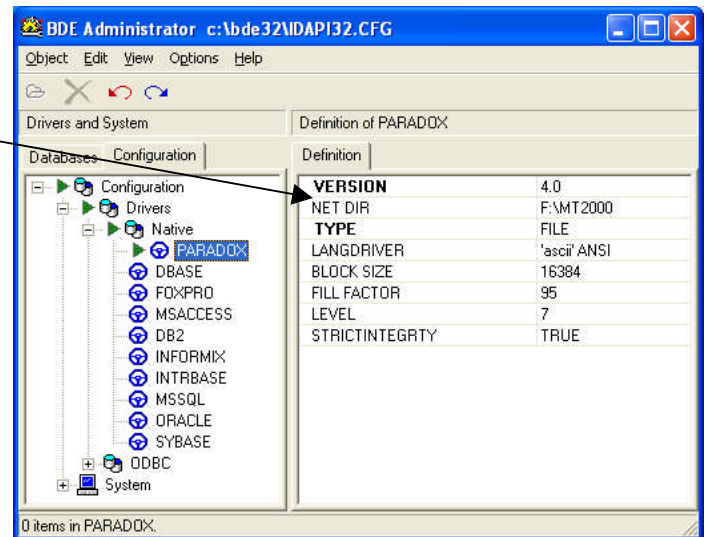
# MUMS Network Research and Repair

## On workstation that works:

Tables: F:\MT2000\TABLES

Record the following:

- In MUMS bottom of screen: TABLES: \_\_\_\_\_
- Under MyComputer check setting for above Drive Letter and write down what it says like "Server\_C on Offic-Computer (F:) \_\_\_\_\_"
- On Windows Menu, MUMS-2000 | BDE-Config
  - Configuration Tab under paradox see NET DIR and write it down: \_\_\_\_\_



Note: In some cases the network drive is mapped to server's C:\MT2000 so F: would mean C:\MT2000 and your tables would be set to F:\TABLES and NET DIR would be F:

## On workstation that does not work:

Change/Verify following:

- Under MyComputer check for mapped drive and if not correct use the Tools-Map Network Drive menu item to set it correctly.
- Go into BDE Config and check the settings and if need to change make sure you only click once on PARADOX and after you change click on the field below NetDir and then exit and save changes.
- Under MyComputer go to C:\Mt2000 and click on mt2000.ini (configuration file)
  - Change to match your TABLES from above for both TABLES and REPORTS to use correct Drive letter and path

```
[Main]
TableDir=F:\mt2000\Tables
ReportsDir=F:\MT2000\Reports
```